

CERTIFIED LAND CORNER RECORDATION

DESCRIPTION OF CORNER EVIDENCE FOUND, AND ORIGINAL RECORD (If known)

LOCATION Found broken 6" x 12" x 24" Granite stone, plainly marked with
 1 notch on South edge and 3 notches on East edge, bottom portion
 firmly set.

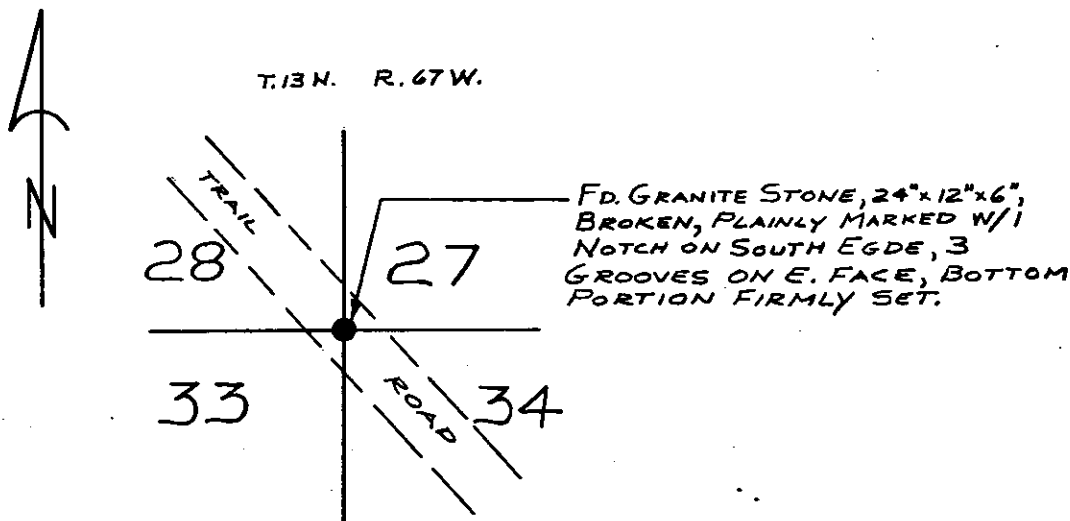
S.28 S.27
 S.33 S.34

T.13N., R.67W.
 6th P.M.

DESCRIPTION OF MONUMENT AND ACCESSORIES ESTABLISHED
 TO PERPETUATE THE ORIGINAL LOCATION OF THIS CORNER:

No ties available.

SKETCH, WITH COURSE AND DISTANCE TO ADJACENT CORNER IF DETERMINED IN THIS SURVEY.
 (May Sketch or Paste Reproduction on Reverse Side.)



I, JOHN A. STEIL certify that I have carefully performed or reviewed the work done on the diagrammed corner as reported on this recordation form and approve the same.

John A. Steil
 Signature of Surveyor

2500
 Registration No.

STATE OF WYOMING,
 Office of Clerk and Recorder,
 County of Taramie

568011

This "corner record" was filed for record on the _____ day of FEB 15 1980, 19____, was noted on the cross-index plat and is assigned page No. _____, in book No. _____

James C. Whitehead
 County Official

Cross Index No. <u>V-13</u>	T. <u>13</u>	R. <u>67</u>	Mer.
_____	T. _____	R. _____	Mer.
_____	T. _____	R. _____	Mer.
_____	T. _____	R. _____	Mer.
_____	T. _____	R. _____	Mer.
_____	T. _____	R. _____	Mer.

V-13 13-67